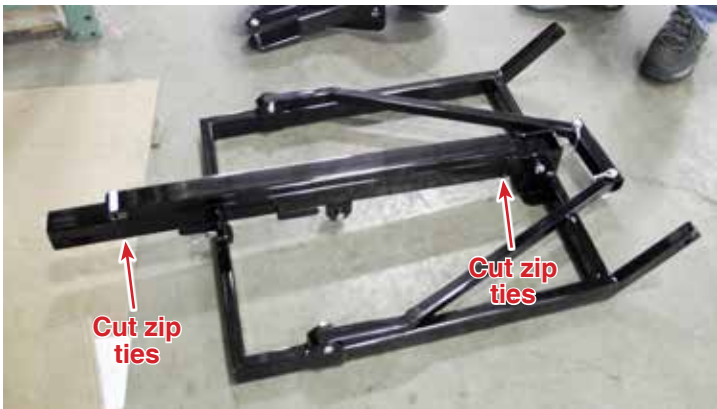


# QUICK REFERENCE GUIDE



## KEYSER MANUFACTURING HT TIRE CART ASSEMBLY

**K** *We can do that!*  
**Keyser**  
Manufacturing Co.



1. Cut zip ties holding brace to frame and set aside.



2. Unfold front and rear support bars.



3. Attach brace to front and rear supports, making sure the sticker is facing down and towards the bottom.



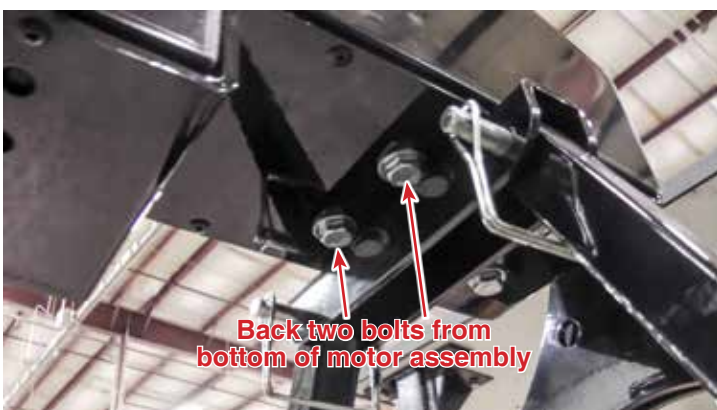
Image 1  
Top and bottom views of brace attached to frame.



4. Attach mounting bracket to back of motor.



5. Attach motor assembly to back of stand.



6. Temporarily remove back two bolts from bottom of motor, place front brace over holes, reattach bolts.



7. Attach wheels to frame.





Image 2  
Needler Assembly



1. Attach needler assembly to bottom of motor assembly.



2. Unfold needler support foot.



3. Screw needler arm to heim.



Image 3  
Van Alstine Siper attached to siper attachment.



Image 4  
Tire wrap support attached to needler assembly.



Image 5  
Tire wrap arm attached to support.

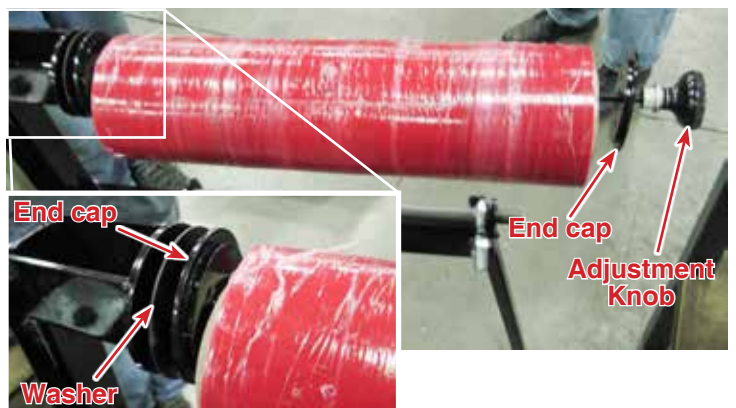


Image 6  
Tire wrap roll