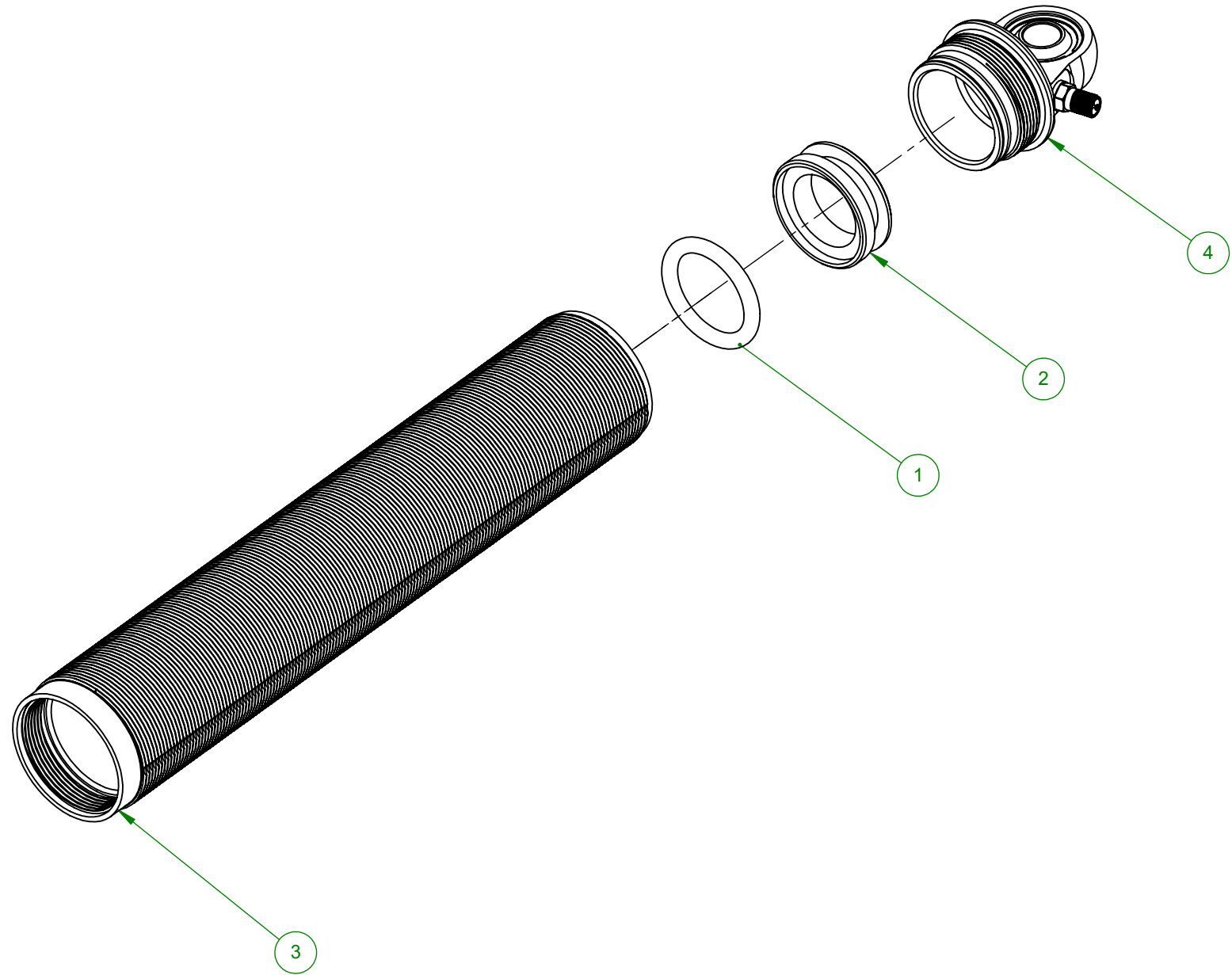
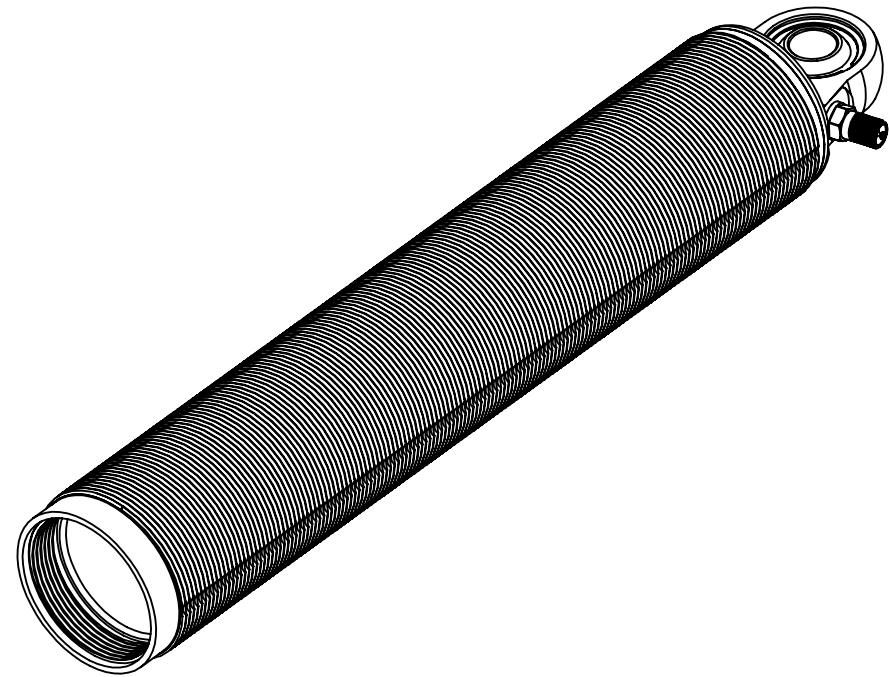




REVISIONS					
ZONE	REV.	DESCRIPTION	DATE	APPROVED	EPCN NO.
	A	ASSEMBLY CREATED	6/4/2019	KWK	



ITEM NO.	PART NUMBER	PART DESCRIPTION	QTY.	WEIGHT	SURFACE AREA	PART DESCRIPTION
1	310 30213	FLOATING PISTON O-RING	1	1.133 LBS	209.115 IN. ²	ALUMINUM AVENGER TUBE ASSEMBLY
2	310 30334	STANDARD FLOATING PISTON	1			MATERIAL
3	310 4102X	PRESSURE TUBE, ECONOMY - ALUMINUM	1			RELATIVE TO COMPONENTS
4	310 41001-50	ALUMINUM AVENGER END CAP ASSEMBLY	1			DWG. NO. 310 4102X-10
						DRAWN BY EKM
						APPROVAL KWK
						SIZE B
						SCALE 1:2
						SHEET 1 OF 1
						REV. A

BREAK EDGES .010 +/- 0.005" X 45°, FILLET RADII 0.010" +/- 0.005"
 TOLERANCES (UOS): .XX +/- .01", .XXX +/- .003", ANG +/- 0.5°
 ALL SURFACE FINISHES TO BE Ra 64 OR BETTER UNLESS OTHERWISE SPECIFIED.
 THIS DRAWING, INFORMATION, AND TECHNICAL DATA CONTAINED WITHIN ARE THE EXCLUSIVE PROPERTY OF INTEGRA SHOCKS AND SHALL BE RETURNED UPON REQUEST. THIS DRAWING IS NOT TO BE REPRODUCED IN WHOLE OR IN PART, NOR SHALL ANY INFORMATION OR TECHNICAL DATA BE SUPPLIED, IN ANY FORM, TO ANYONE ELSE WITHOUT THE EXPRESS WRITTEN CONSENT OF INTEGRA SHOCKS.

5

4

3

2

1

5

4

3

2

1

E

D

C

B

A

E

D

C

B

A