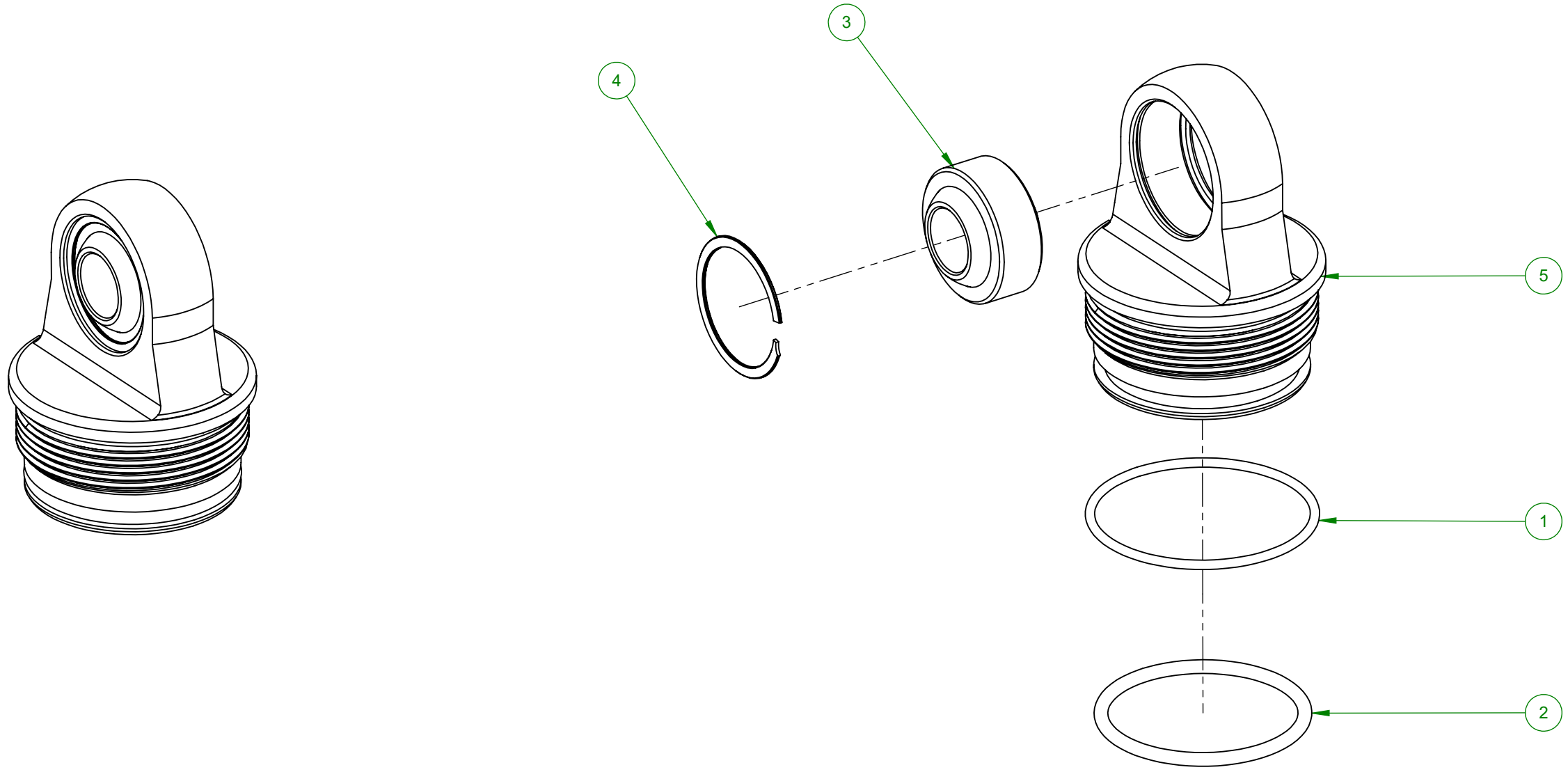




REVISIONS					
ZONE	REV.	DESCRIPTION	DATE	APPROVED	EPCN NO.
	A	ASSEMBLY CREATED	6/4/2019	KWK	



ITEM NO.	PART NUMBER	PART DESCRIPTION	QTY.
1	310 30210	ROD GUIDE SECONDARY O-RING	1
2	310 30211	ROD GUIDE PRIMARY O-RING	1
3	310 30327	SHOCK BEARING	1
4	310 30328	VH-106	1
5	310 45001	END CAP, STEEL ECONOMY	1

WEIGHT	SURFACE AREA	PART DESCRIPTION
0.422 LBS	31.445 IN. ²	STEEL END CAP ASSEMBLY - AVENGER
<small>BREAK EDGES .010 +/- 0.005" X 45°, FILLET RADII 0.010" +/- 0.005" TOLERANCES (UOS): .XX +/- .01", .XXX +/- .003", ANG +/- 0.5°</small>		
<small>ALL SURFACE FINISHES TO BE Ra 64 OR BETTER UNLESS OTHERWISE SPECIFIED.</small>		
<small>THIS DRAWING, INFORMATION, AND TECHNICAL DATA CONTAINED WITHIN ARE THE EXCLUSIVE PROPERTY OF INTEGRA SHOCKS AND SHALL BE RETURNED UPON REQUEST. THIS DRAWING IS NOT TO BE REPRODUCED IN WHOLE OR IN PART, NOR SHALL ANY INFORMATION OR TECHNICAL DATA BE SUPPLIED, IN ANY FORM, TO ANYONE ELSE WITHOUT THE EXPRESS WRITTEN CONSENT OF INTEGRA SHOCKS.</small>		
DWG. NO. 310 45001-50		DRAWN BY EKM
SIZE B		APPROVAL KWK
SCALE 1:1		SHEET 1 OF 1
		REV. A

5

4

3

2

1

5

4

3

2

1

E

E

D

D

C

C

B

B

A

A