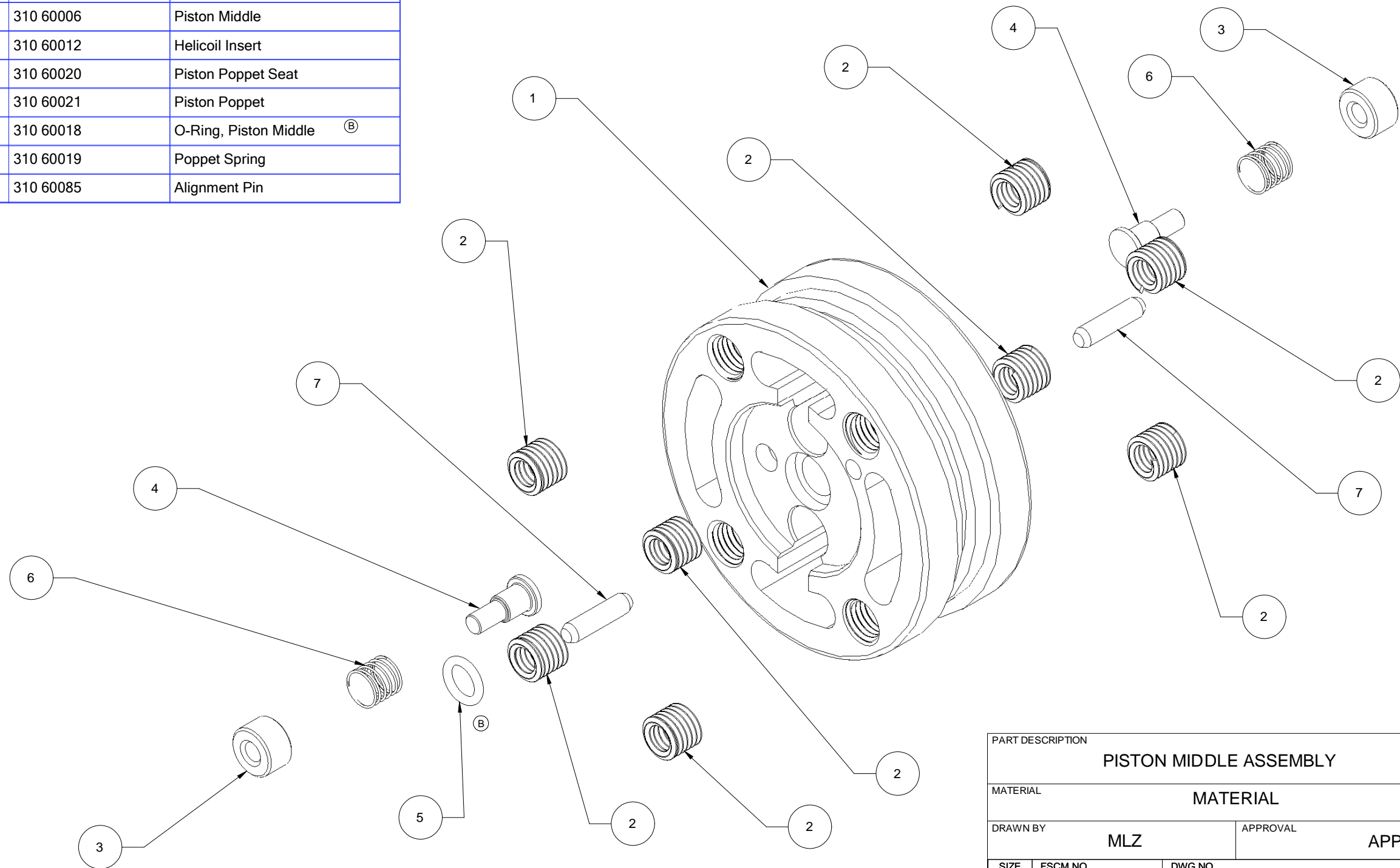




Item Number	Quantity	Part Number	Part Name
1	1	310 60006	Piston Middle
2	8	310 60012	Helicoil Insert
3	2	310 60020	Piston Poppet Seat
4	2	310 60021	Piston Poppet
5	1	310 60018	O-Ring, Piston Middle ^(B)
6	2	310 60019	Poppet Spring
7	2	310 60085	Alignment Pin

REVISIONS				
ZONE	REV	DESCRIPTION	DATE	APPROVED
	A	RELEASED	14-MAY-2009	
	B	UPDATED O-RING NAME/LOCATION	26-JAN-2010	



THIS DRAWING, INFORMATION AND TECHNICAL DATA CONTAINED WITHIN ARE THE EXCLUSIVE PROPERTY OF INTEGRA RACING SHOCKS AND SHALL BE RETURNED UPON REQUEST. THIS DRAWING IS NOT TO BE REPRODUCED IN WHOLE OR IN PART, NOR SHALL ANY INFORMATION OR TECHNICAL DATA BE SUPPLIED, IN ANY FORM, TO ANY ONE ELSE WITHOUT THE EXPRESS WRITTEN CONSENT OF INTEGRA RACING SHOCKS

BREAK EDGES .010 +/- 0.005" X 45° FILLET RADIUS 0.010" +/- 0.005"
 TOLERANCES (UCS): .XX +/- .01", .XXX +/- .003", ANG +/- 0.5°
 ALL SURFACE FINISHES TO BE Ra 64 OR BETTER UNLESS OTHERWISE SPECIFIED.

PART DESCRIPTION			
PISTON MIDDLE ASSEMBLY			
MATERIAL			
MATERIAL			
DRAWN BY		APPROVAL	
MLZ		APPROVER	
SIZE	FSCM NO.	DWG NO.	REV
B		310 60006-50	B
SCALE		SHEET	
2" = 1"			