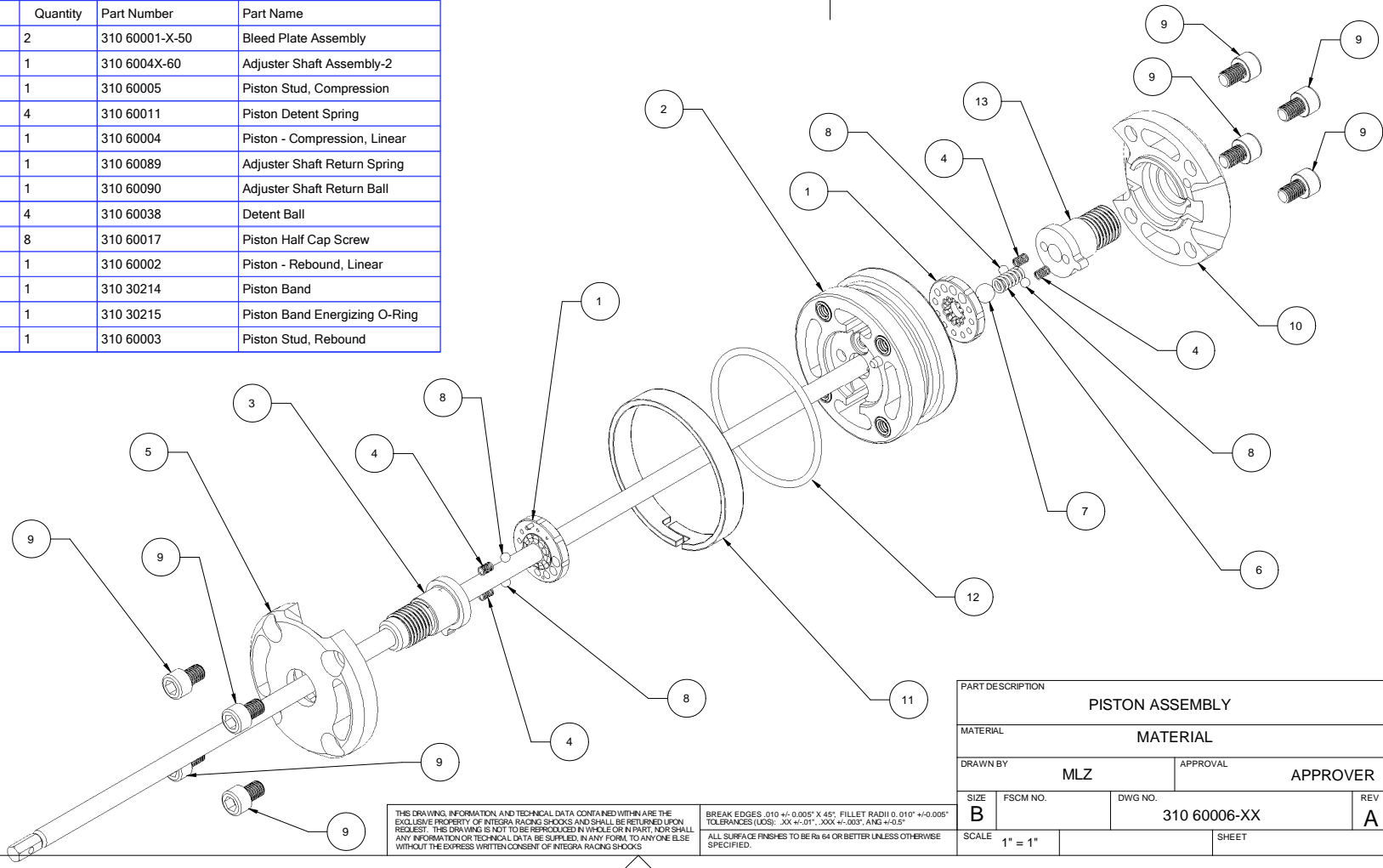




Item Number	Quantity	Part Number	Part Name
1	2	310 60001-X-50	Bleed Plate Assembly
2	1	310 6004X-60	Adjuster Shaft Assembly-2
3	1	310 60005	Piston Stud, Compression
4	4	310 60011	Piston Detent Spring
5	1	310 60004	Piston - Compression, Linear
6	1	310 60089	Adjuster Shaft Return Spring
7	1	310 60090	Adjuster Shaft Return Ball
8	4	310 60038	Detent Ball
9	8	310 60017	Piston Half Cap Screw
10	1	310 60002	Piston - Rebound, Linear
11	1	310 30214	Piston Band
12	1	310 30215	Piston Band Energizing O-Ring
13	1	310 60003	Piston Stud, Rebound

REVISIONS				
ZONE	REV	DESCRIPTION	DATE	APPROVED
A	RELEASED		18-MAY-2009	



THIS DRAWING, INFORMATION, AND TECHNICAL DATA CONTAINED WITHIN ARE THE EXCLUSIVE PROPERTY OF INTEGRA RACING SHOCKS AND SHALL BE RETURNED UPON REQUEST. THIS DRAWING IS NOT TO BE REPRODUCED IN WHOLE OR IN PART, NOR SHALL ANY INFORMATION OR TECHNICAL DATA BE SUPPLIED IN ANY FORM TO ANYONE ELSE WITHOUT THE EXPRESS WRITTEN CONSENT OF INTEGRA RACING SHOCKS

BREAK EDGES .010  $\pm$  .0005" X 45°; FILLET RADIUS 0.010"  $\pm$  .0005"  
 TOLERANCES (UNLESS OTHERWISE SPECIFIED):  
 FRACTIONS: .XX  $\pm$  .01", .XXX  $\pm$  .003", ANG  $\pm$  .05"  
 ALL SURFACE FINISHES TO BE Ra 64 OR BETTER UNLESS OTHERWISE SPECIFIED.

PART DESCRIPTION			
PISTON ASSEMBLY			
MATERIAL			
MATERIAL			
DRAWN BY		APPROVAL	
MLZ		APPROVER	
SIZE	FSCM NO.	DWG NO.	REV
B		310 60006-XX	A
SCALE		SHEET	
1" = 1"			

310 60006-XX\_PISTON ASSEMBLY