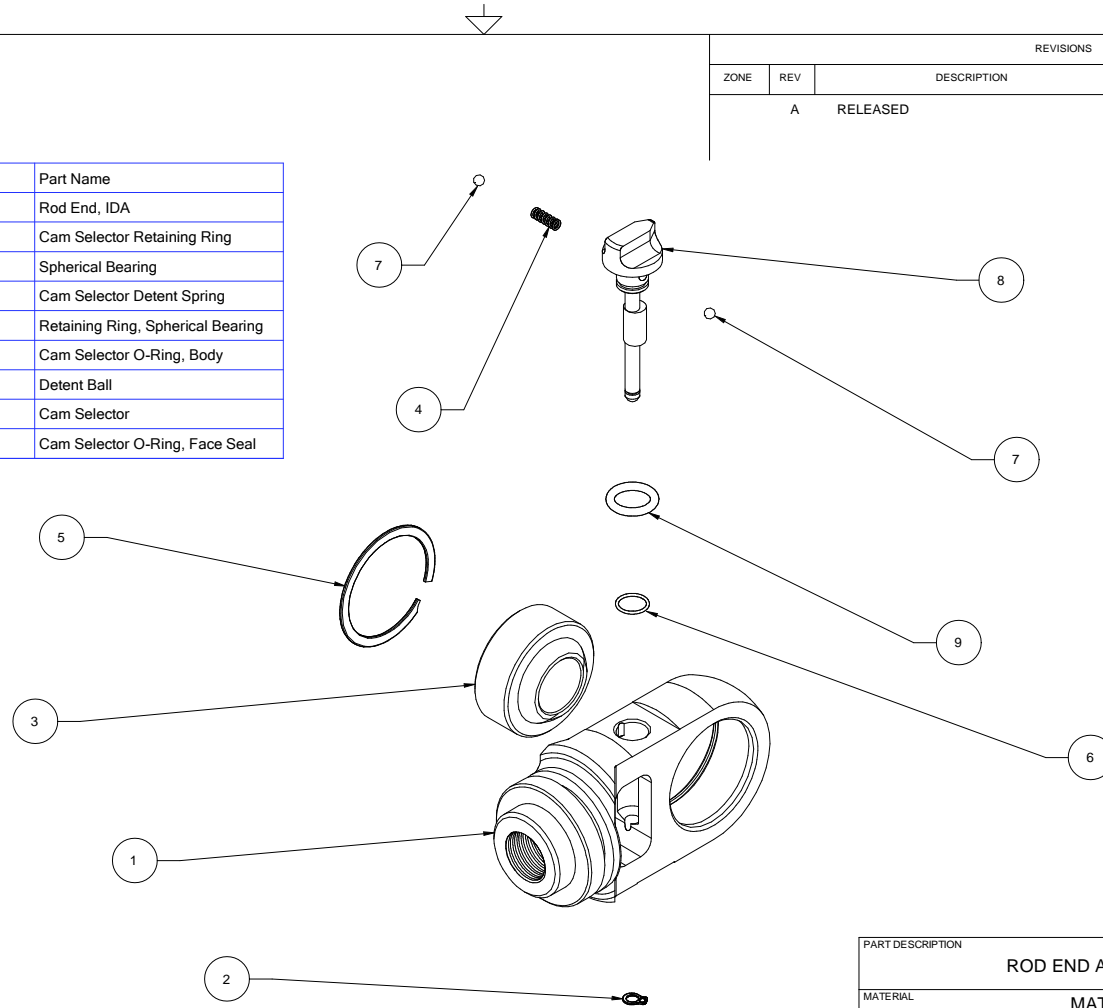




REVISIONS				
ZONE	REV	DESCRIPTION	DATE	APPROVED
A		RELEASED	14-MAY-2009	

Item Number	Quantity	Part Number	Part Name
1	1	310 60030	Rod End, IDA
2	1	310 60036	Cam Selector Retaining Ring
3	1	310 30327	Spherical Bearing
4	1	310 60037	Cam Selector Detent Spring
5	1	310 30328	Retaining Ring, Spherical Bearing
6	1	310 60034	Cam Selector O-Ring, Body
7	2	310 60038	Detent Ball
8	1	310 60032	Cam Selector
9	1	310 OR-011VT75	Cam Selector O-Ring, Face Seal



THIS DRAWING, INFORMATION, AND TECHNICAL DATA CONTAINED WITHIN ARE THE EXCLUSIVE PROPERTY OF INTEGRA RACING SHOCKS AND SHALL BE RETURNED UPON REQUEST. THIS DRAWING IS NOT TO BE REPRODUCED IN WHOLE OR IN PART, NOR SHALL ANY INFORMATION OR TECHNICAL DATA BE SUPPLIED IN ANY FORM TO ANYONE ELSE WITHOUT THE EXPRESS WRITTEN CONSENT OF INTEGRA RACING SHOCKS.

BREAK EDGES .010  $\pm$  0.005" X 45°; FILLET RADIUS 0.010"  $\pm$  0.005"  
 TOLERANCES (UNLESS OTHERWISE SPECIFIED): .XX  $\pm$  .01", .XXX  $\pm$  .003", ANG  $\pm$  0.5°  
 ALL SURFACE FINISHES TO BE Ra 64 OR BETTER UNLESS OTHERWISE SPECIFIED.

PART DESCRIPTION			
ROD END ASSEMBLY			
MATERIAL			
MATERIAL			
DRAWN BY		APPROVAL	
MLZ		APPROVER	
SIZE	FSCM NO.	DWG NO.	REV
B		310 60030-50	A
SCALE	1" = 1"		SHEET

310 60030-50\_ROD END ASSEMBLY