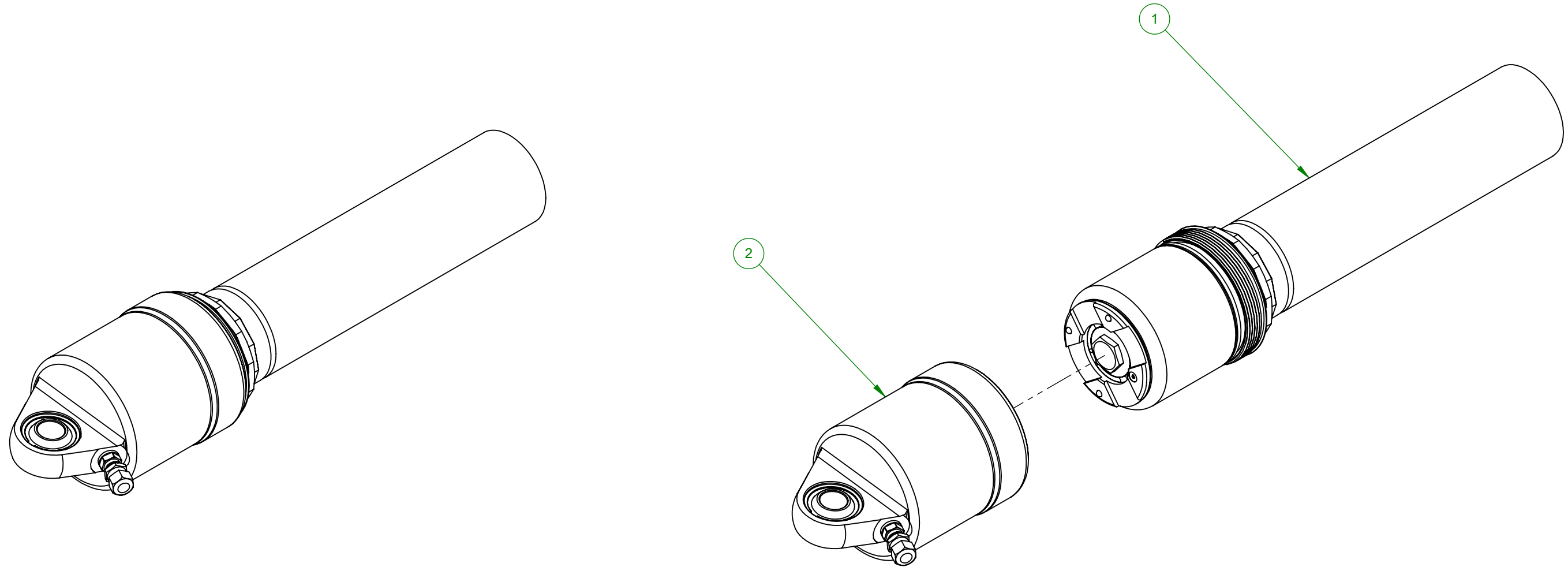




REVISIONS					
ZONE	REV.	DESCRIPTION	DATE	APPROVED	EPCN NO.
	A	ASSEMBLY CREATED	4/8/2019	KWK	



ITEM NO.	PART NUMBER	PART DESCRIPTION	QTY.
1	310 60080-XXS	BLADDER BASE ASSEMBLY	1
2	310 60181-50	END CAP ASSEMBLY, IDA	1

WEIGHT (lbs)		3.263	PART DESCRIPTION		
S.A. (in ²)		313.543	BASE ASSEMBLY, IDA		
MATERIAL			RELATIVE TO COMPONENTS		
DWG. NO		310 60040-XX	DRAWN BY		EKM
APPROVAL		KWK		REV	
SIZE		B	SCALE		1:2
SHEET		1 OF 1		REV	
				A	

BREAK EDGES .010 +/- 0.005" X 45°, FILLET RADII 0.010" +/- 0.005"
 TOLERANCES (UOS): .XX +/- .01", .XXX +/- .003", ANG +/- 0.5°
 ALL SURFACE FINISHES TO BE Ra 64 OR BETTER UNLESS OTHERWISE SPECIFIED.
 THIS DRAWING, INFORMATION, AND TECHNICAL DATA CONTAINED WITHIN ARE THE EXCLUSIVE PROPERTY OF INTEGRA SHOCKS AND SHALL BE RETURNED UPON REQUEST. THIS DRAWING IS NOT TO BE REPRODUCED IN WHOLE OR IN PART, NOR SHALL ANY INFORMATION OR TECHNICAL DATA BE SUPPLIED, IN ANY FORM, TO ANYONE ELSE WITHOUT THE EXPRESS WRITTEN CONSENT OF INTEGRA SHOCKS.