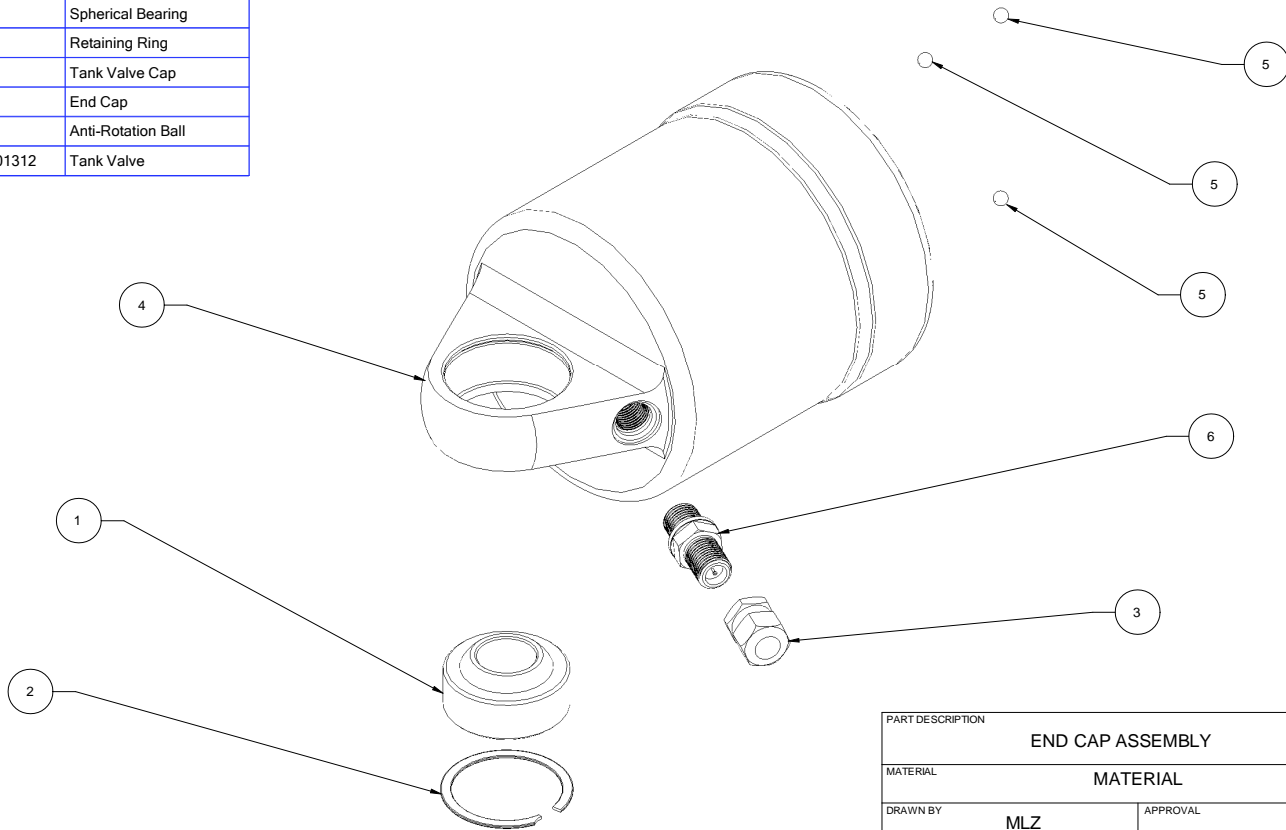




Item Number	Quantity	Part Number	Part Name
1	1	310 30327	Spherical Bearing
2	1	310 30328	Retaining Ring
3	1	310 30337-2	Tank Valve Cap
4	1	310 60081	End Cap
5	3	310 30380	Anti-Rotation Ball
6	1	310 40TKVL001312	Tank Valve



REVISIONS				
ZONE	REV	DESCRIPTION	DATE	APPROVED
	A	RELEASED	12-MAY-2009	

PART DESCRIPTION				
END CAP ASSEMBLY				
MATERIAL MATERIAL				
DRAWN BY MLZ			APPROVAL	
SIZE B	FSCM NO.	DWG NO. 310 60081-50	REV A	
SCALE 1" = 1"	SHEET			

THIS DRAWING, INFORMATION, AND TECHNICAL DATA CONTAINED WITHIN ARE THE EXCLUSIVE PROPERTY OF INTEGRA RACING SHOCKS AND SHALL BE RETURNED UPON REQUEST. THIS DRAWING IS NOT TO BE REPRODUCED IN WHOLE OR IN PART, NOR SHALL ANY INFORMATION OR TECHNICAL DATA BE SUPPLIED IN ANY FORM TO ANYONE ELSE WITHOUT THE EXPRESS WRITTEN CONSENT OF INTEGRA RACING SHOCKS

BREAK EDGES .010 \pm 0.005" X 45°; FILLET RADIUS 0.010" \pm 0.005"
TOLERANCES (UNLESS OTHERWISE SPECIFIED): .XX \pm .01", .XXX \pm .005", ANG \pm 0.5°
ALL SURFACE FINISHES TO BE Ra 64 OR BETTER UNLESS OTHERWISE SPECIFIED.