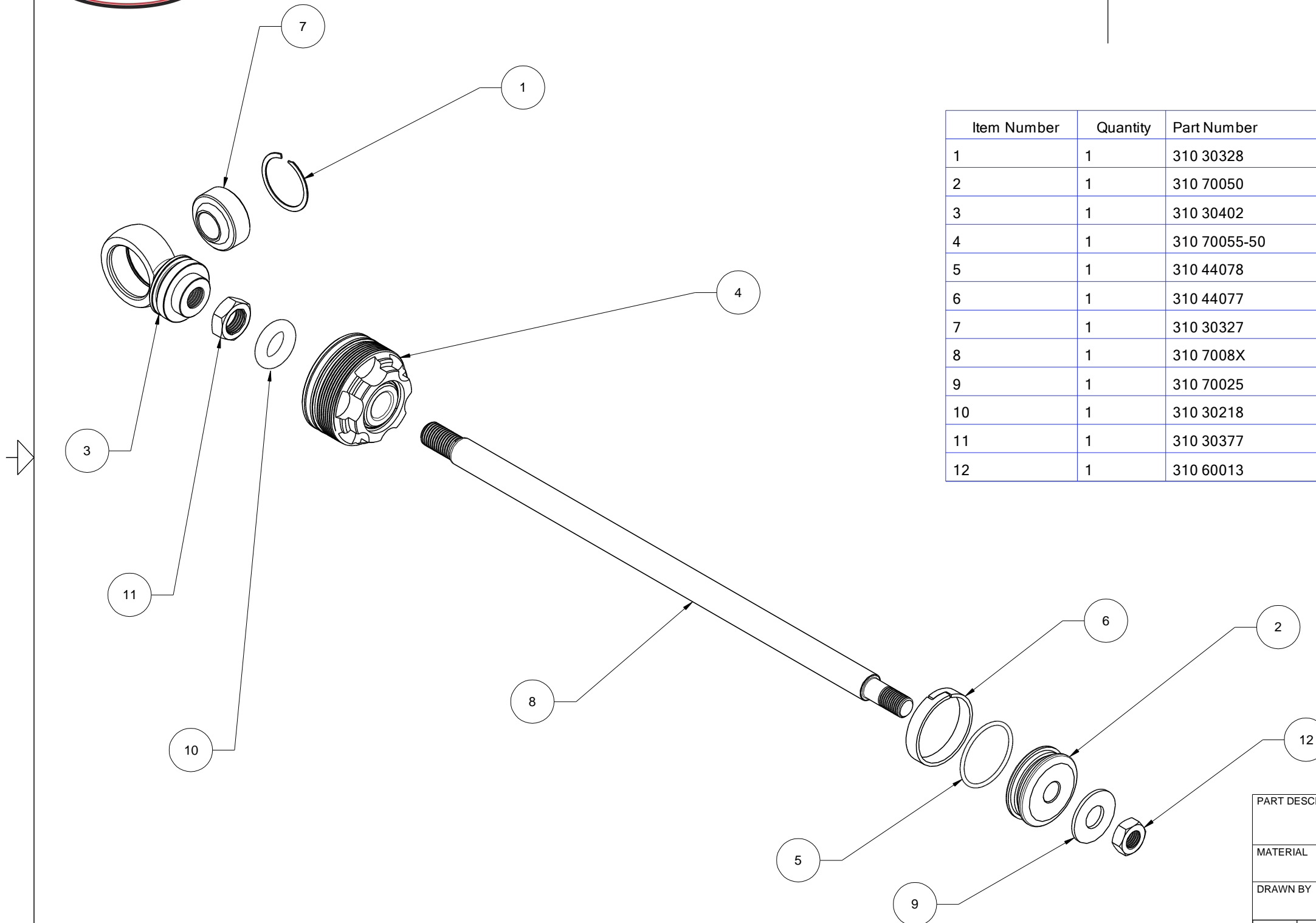




REVISIONS				
ZONE	REV	DESCRIPTION	DATE	APPROVED
	A	RELEASED FOR PRODUCTION	15-OCT-2013	



Item Number	Quantity	Part Number	Part Name
1	1	310 30328	RETAINING RING, SPHERICAL BEARING
2	1	310 70050	PISTON, PRIMARY
3	1	310 30402	ROD END
4	1	310 70055-50	ROD GUIDE ASSY
5	1	310 44078	O-RING, PISTON BAND ENERGIZING
6	1	310 44077	PISTON BAND 1 3/8" BORE
7	1	310 30327	SPHERICAL BEARING
8	1	310 7008X	PISTON ROD
9	1	310 70025	3/8 HARDENED FLAT WASHER
10	1	310 30218	TRAVEL MARKER, PISTON ROD
11	1	310 30377	JAM NUT
12	1	310 60013	PISTON NUT, 3/8 - 24UNF

NOTES:

THIS DRAWING, INFORMATION, AND TECHNICAL DATA CONTAINED WITHIN ARE THE EXCLUSIVE PROPERTY OF INTEGRA RACING SHOCKS AND SHALL BE RETURNED UPON REQUEST. THIS DRAWING IS NOT TO BE REPRODUCED IN WHOLE OR IN PART, NOR SHALL ANY INFORMATION OR TECHNICAL DATA BE SUPPLIED, IN ANY FORM, TO ANYONE ELSE WITHOUT THE EXPRESS WRITTEN CONSENT OF INTEGRA RACING SHOCKS

BREAK EDGES .010 +/- 0.005" X 45°, FILLET RADII 0.010" +/- 0.005"
 TOLERANCES (UOS): .XX +/- .01", .XXX +/- .003", ANG +/- 0.5°
 ALL SURFACE FINISHES TO BE Ra 64 OR BETTER UNLESS OTHERWISE SPECIFIED.

PART DESCRIPTION			
HEAD ASSY, 4-WAY			
MATERIAL			
DRAWN BY		APPROVAL	
MLZ			
SIZE	FSCM NO.	DWG NO.	REV
B		310 7008X-50	A
SCALE	QUANTITY	SHEET	
1" = 2"		1 OF 1	