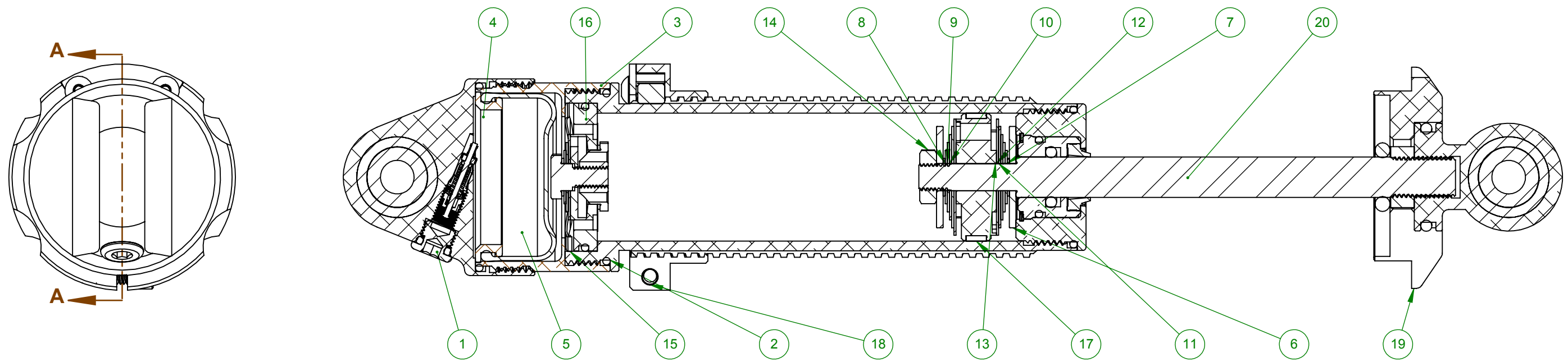




REVISIONS					
ZONE	REV.	DESCRIPTION	DATE	APPROVED	EPCN NO.

SECTION A-A



WEIGHT 0.924 LBS	SURFACE AREA 200.709 IN.²	PART DESCRIPTION 75 SERIES 1/4 MIDGET SHOCK ASSY			
BREAK EDGES .010 +/- 0.005" X 45°, FILLET RADII 0.010" +/- 0.005" TOLERANCES (UOS): .XX +/- .01", .XXX +/- .003", ANG +/- 0.5°		MATERIAL RELATIVE TO COMPONENTS			
ALL SURFACE FINISHES TO BE Ra 64 OR BETTER UNLESS OTHERWISE SPECIFIED.		DWG. NO. 310 75X3X	DRAWN BY KWK	APPROVAL	
THIS DRAWING, INFORMATION, AND TECHNICAL DATA CONTAINED WITHIN ARE THE EXCLUSIVE PROPERTY OF INTEGRA SHOCKS AND SHALL BE RETURNED UPON REQUEST. THIS DRAWING IS NOT TO BE REPRODUCED IN WHOLE OR IN PART, NOR SHALL ANY INFORMATION OR TECHNICAL DATA BE SUPPLIED, IN ANY FORM, TO ANYONE ELSE WITHOUT THE EXPRESS WRITTEN CONSENT OF INTEGRA SHOCKS.		SIZE B	SCALE 1:1	SHEET 1 OF 3	REV. A

1.	
PROCESSING NOTES:	

5

4

3

2

1

5

4

3

2

1

E

E

D

D

C

C

B

B

A

A



ITEM NO.	PART NUMBER	PART DESCRIPTION	QTY.
1	310 75353-10	END CAP ASSEMBLY, NSV, .25 MIDGET	1
2	310 75413-10	TUBE ASSEMBLY, .25 MIDGET	1
3	310 75350	END CAP BODY, .25 MIDGET	1
4	310 75351	BLADDER ADAPTER, .25 MIDGET	1
5	310 75352	BLADDER, .25 MIDGET	1
6	310 75396	TRAVEL LIMITER, .25 MIDGET	2
7	310 70TW350020	TORQUE WASHER .350 X .020	2
8	310 70MVD496020	DISC, CARTRIDGE VALVE	2
9	310 70MVD644020	DISC, CARTRIDGE VALVE	2
10	310 70MVD792020	DISC, CARTRIDGE VALVE	2
11	310 70MVD940020	MAIN VALVE DISC .940 X .020	2
12	310 70MVD107020	MAIN VALVE DISC 1.078 X .020	2
13	310 75321	PISTON, LINEAR 3-PORT, .25 MIDGET	1
14	310 75349	PISTON NUT, .25 MIDGET	1
15	310 75346-4	BASE VALVE WAVE RING, .25 MIDGET	1
16	310 75346-10	BASE VALVE ASSEMBLY, .25 MIDGET	1
17	310 46015	PISTON BAND, SMALL BODY - TT	1
18	310 75201	COIL OVER NUT ASSEMBLY, .25 MIDGET	1
19	310 75202	SPRING SEAT, FLAT	1
20	310 75313-10A	PISTON ROD ASSEMBLY, .25 MIDGET	1

WEIGHT 0.924 LBS	SURFACE AREA 200.709 IN.²	PART DESCRIPTION 75 SERIES 1/4 MIDGET SHOCK ASSY	
<small>BREAK EDGES .010 +/- 0.005" X 45°, FILLET RADII 0.010" +/- 0.005" TOLERANCES (UOS): .XX +/- .01", .XXX +/- .003", ANG +/- 0.5°</small>		MATERIAL RELATIVE TO COMPONENTS	
<small>ALL SURFACE FINISHES TO BE Ra 64 OR BETTER UNLESS OTHERWISE SPECIFIED.</small>		DWG. NO. 310 75X3X	DRAWN BY KWK
<small>THIS DRAWING, INFORMATION, AND TECHNICAL DATA CONTAINED WITHIN ARE THE EXCLUSIVE PROPERTY OF INTEGRA SHOCKS AND SHALL BE RETURNED UPON REQUEST. THIS DRAWING IS NOT TO BE REPRODUCED IN WHOLE OR IN PART, NOR SHALL ANY INFORMATION OR TECHNICAL DATA BE SUPPLIED, IN ANY FORM, TO ANYONE ELSE WITHOUT THE EXPRESS WRITTEN CONSENT OF INTEGRA SHOCKS.</small>		APPROVAL	
SIZE B	SCALE 1:1	SHEET 2 OF 3	REV. A



5

4

3

2

1

E

E

D

D

C

C

B

B

A

A

SINGLE LINEAR PISTON
OPTION
VALVE DISCS ARE SPRING
STEEL STAMPED

STANDARD AND 1" EXTENDED
ROD END OPTIONS

NON-ADJUSTABLE SHAFT
3/8" DIAMETER CHROME PLATED

COIL-OVER HARDWARE INCLUDED

BLADDER N2 CHAMBER

BASE VALVE OR NON-BASE VALVE
OPTION USES SAME TUBE ASSEMBLY

END CAP ASSEMBLY
BUILT FOR SCHRADER VALVE
OR NON-SCHRADER VALVE

WEIGHT 0.924 LBS		SURFACE AREA 200.709 IN.²		PART DESCRIPTION 75 SERIES 1/4 MIDGET SHOCK ASSY	
BREAK EDGES .010 +/- 0.005" X 45°, FILLET RADII 0.010" +/- 0.005" TOLERANCES (UOS): .XX +/- .01", .XXX +/- .003", ANG +/- 0.5°				MATERIAL	
ALL SURFACE FINISHES TO BE Ra 64 OR BETTER UNLESS OTHERWISE SPECIFIED.				RELATIVE TO COMPONENTS	
THIS DRAWING, INFORMATION, AND TECHNICAL DATA CONTAINED WITHIN ARE THE EXCLUSIVE PROPERTY OF INTEGRA SHOCKS AND SHALL BE RETURNED UPON REQUEST. THIS DRAWING IS NOT TO BE REPRODUCED IN WHOLE OR IN PART, NOR SHALL ANY INFORMATION OR TECHNICAL DATA BE SUPPLIED, IN ANY FORM, TO ANYONE ELSE WITHOUT THE EXPRESS WRITTEN CONSENT OF INTEGRA SHOCKS.		DWG. NO. 310 75X3X		DRAWN BY KWK	APPROVAL
SIZE B	SCALE 1:1.5		SHEET 3 OF 3		REV. A

5

4

3

2

1